



LYAR Polyclonal Antibody

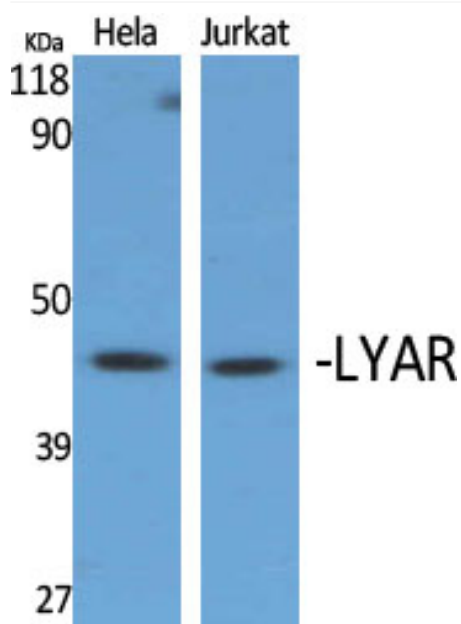
Catalog No	YP-Ab-01851
Isotype	IgG
Reactivity	Human;Rat;Mouse;
Applications	WB;IHC;IF;ELISA
Gene Name	LYAR
Protein Name	Cell growth-regulating nucleolar protein
Immunogen	The antiserum was produced against synthesized peptide derived from human LYAR. AA range:241-290
Specificity	LYAR Polyclonal Antibody detects endogenous levels of LYAR protein.
Formulation	Liquid in PBS containing 50% glycerol, 0.5% BSA and 0.02% sodium azide.
Source	Polyclonal, Rabbit,IgG
Purification	The antibody was affinity-purified from rabbit antiserum by affinity-chromatography using epitope-specific immunogen.
Dilution	WB: 1/500 - 1/2000. IHC: 1/100 - 1/300. ELISA: 1/10000.. IF 1:50-200
Concentration	1 mg/ml
Purity	≥90%
Storage Stability	-20°C/1 year
Synonyms	LYAR; PNAS-5; Cell growth-regulating nucleolar protein
Observed Band	44kD
Cell Pathway	Nucleus . Nucleus, nucleolus . Cytoplasm . Cell projection, cilium, photoreceptor outer segment . Component of pre-ribosomal particles, including pre-40S, pre-60S and pre-90S (PubMed:24495227). Associated with cytoplasmic ribosomes, but not polysomes, as a component of the 60S subunit (PubMed:24990247). In the retina, predominantly expressed in photoreceptor outer segments (By similarity). In the nucleolus, colocalizes with nucleolin/NCL, therefore may reside in the dense fibrillar component (DFC) (By similarity). .
Tissue Specificity	Predominantly expressed in testis.
Function	similarity:Contains 2 C2HC-type zinc fingers.,
Background	similarity:Contains 2 C2HC-type zinc fingers.,
matters needing attention	Avoid repeated freezing and thawing!



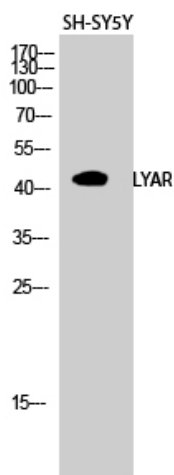
Usage suggestions

This product can be used in immunological reaction related experiments. For more information, please consult technical personnel.

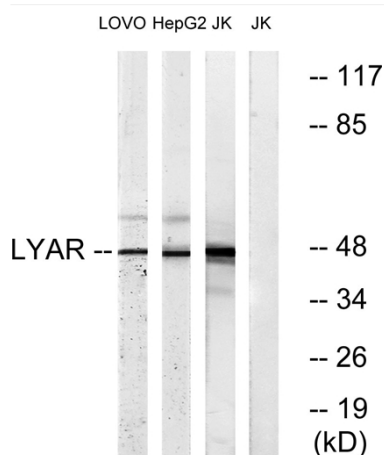
Products Images



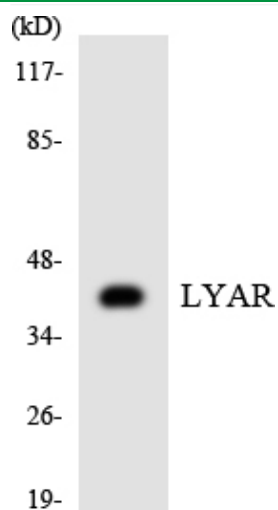
Western Blot analysis of various cells using LYAR Polyclonal Antibody diluted at 1:2000 cells nucleus extracted by Minute TM Cytoplasmic and Nuclear Fractionation kit (SC-003, Inventbiotech, MN, USA).



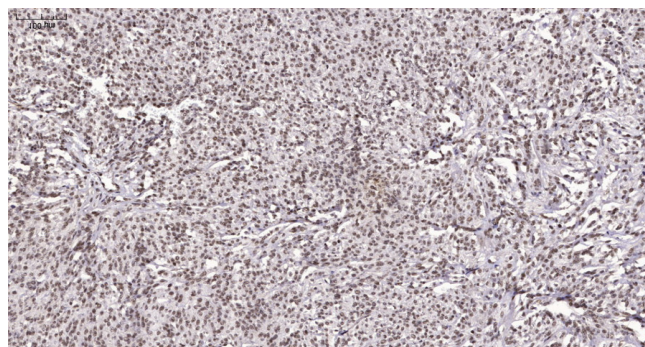
Western Blot analysis of SH-SY5Y cells using LYAR Polyclonal Antibody diluted at 1:2000 cells nucleus extracted by Minute TM Cytoplasmic and Nuclear Fractionation kit (SC-003, Inventbiotech, MN, USA).



Western blot analysis of lysates from Jurkat, HepG2, and LOVO cells, using LYAR Antibody. The lane on the right is blocked with the synthesized peptide.



Western blot analysis of the lysates from K562 cells using LYAR antibody.



Immunohistochemical analysis of paraffin-embedded human Small intestinal stromal tumor. 1, Tris-EDTA, pH9.0 was used for antigen retrieval. 2 Antibody was diluted at 1:200(4° overnight). 3, Secondary antibody was diluted at 1:200(room temperature, 45min).